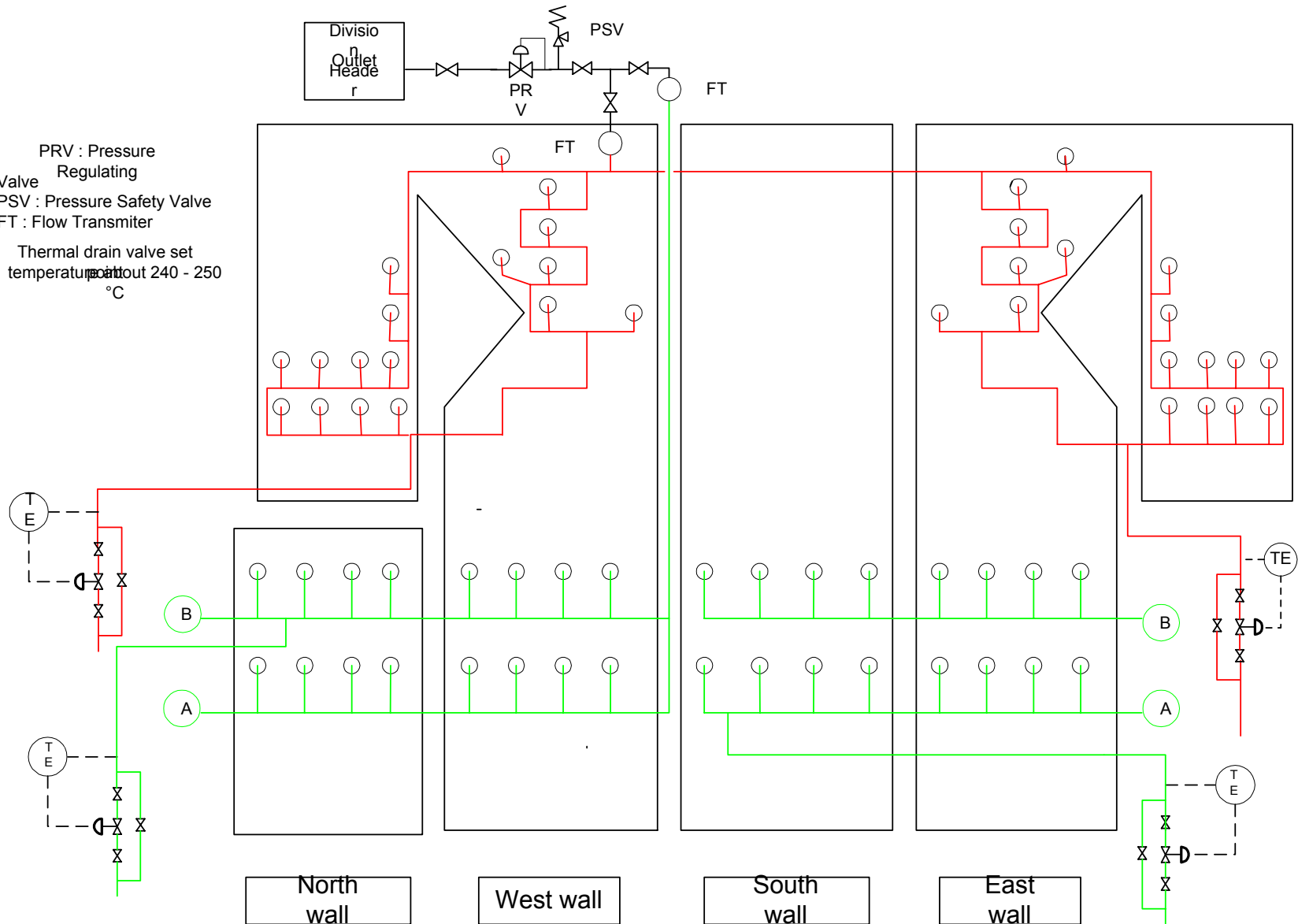


PRV : Pressure
Regulating
Valve
PSV : Pressure Safety Valve
FT : Flow Transmitter
Thermal drain valve set
temperature point 240 - 250
°C



Drawing No.: SD1042

Related document: PIP.OPS.1042

Drawing Source:

SOOTBLOWER

Revision No.: 00

Drawn by: .

Pages: 1 of 1